

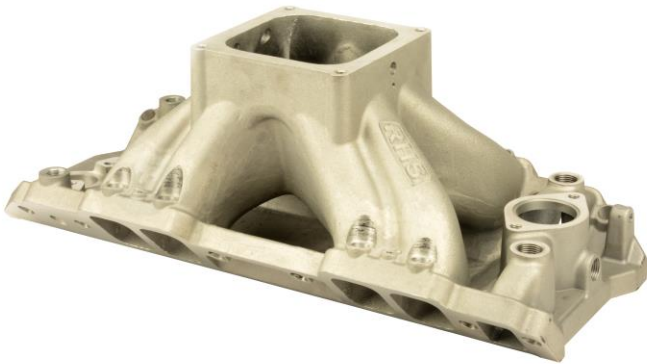


RHS® 24° Aluminum Intake Manifolds For Big Block Chevy Engines Are Designed For Carbureted & EFI Applications

Memphis, TN – These manifolds are designed for maximum airflow and power with a 4500 Dominator-style carburetor flange. They are engineered to port-match-fit RHS® Big Block Chevrolet cylinder heads and available in both carb and EFI versions that offer excellent performance for drag racing and marine applications.

Designed for Big Block Chevrolet engines with rectangular-port cylinder heads, new 24° Aluminum Intake Manifolds from RHS® are proven to outperform competing products on the market. They feature a single-plane design and utilize individual runner dividers for excellent throttle response and exceptional torque. These manifolds are available for both short- and tall-deck blocks, and all versions utilize a standard BBC distributor. There is no need for a slip collar distributor or special distributor for tall-deck engines. They feature auxiliary water ports, an integral water crossover and dual-sided distributor ports. Ports for water lines are also provided at all four corners.

RHS® also teamed up with sister brand FAST® to create an EFI version of the manifolds that angles injectors to point directly at the valve stem. In addition, the EFI manifolds feature integral sensors improving function, fitment and packaging.



Quick Facts

Product: RHS® 24° Aluminum Intake Manifolds for Big Block Chevrolet Engines

Part Number: #11902 (Carbureted); #11903 (EFI); #11904 (Tall Deck Carbureted); #11905 (tall deck EFI)

Street Price: \$399.95 (Carbureted); \$434.95 (EFI)

Social Media Pitch: RHS® 24° Aluminum Intake Manifolds for BBC Engines port-match-fit RHS® heads & are available in carb, EFI versions

Features & Benefits:

- Designed for max. power & airflow, port-match-fit RHS BBC cylinder heads
- Feature single-plane design, utilize individual runner dividers for throttle response & torque
- Available for short- & tall-deck blocks, all versions utilize standard BBC distributor
- Carb & EFI versions available
- Excellent choice for drag racing & marine applications

Media Contact: Dan Hodgdon, dhodgdon@compcams.com, 901.795.2400 ext. 1237.

 [facebook.com/RacingHeadService](https://www.facebook.com/RacingHeadService)

 twitter.com/RHSWins

 [cpgnationtv.com](https://www.youtube.com/cpgnationtv)

 [cpgnation.com](https://www.cpgnation.com)

Hi-res images & MS Word file available for download at www.AutoPressReleases.com.

